

Swiftkit® System - Carbon Filters for AHU's

Introduction

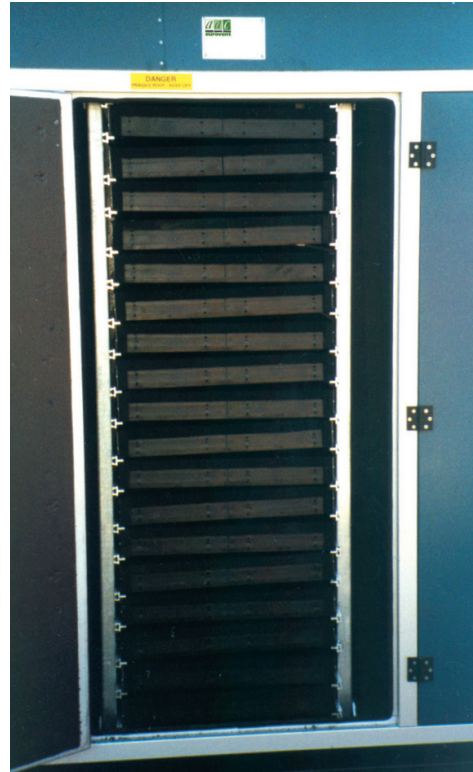
The **AAC AHU Swiftkit®** is specifically designed for Air Handling Unit manufacturers to incorporate activated carbon filters into their AHU's at low cost without the need for purchasing an expensive enclosure/housing.

Some of the countries most prestigious museums and historical sites are now protected using **AAC Eurovent's** 'PR' filters and frames installed in AHU's.

All necessary parts are provided for either front access or side access and once the internal dimensions have been provided to **AAC Eurovent** only hand-tools and labour are required by the AHU manufacturer.

Features & Benefits

- Low cost
- Easy to install
- Plastic refillable filter system
- **AAC Colourcell®** filter system
- Standard parts (usually ex-stock)
- Easy to retrofit on site



AAC Swiftkit® carbon filter installation

Typical Applications

- Adsorbing odours such as cooking, sewage waste and animal odours.
- General atmospheric air purification for offices/airports
- Solvents and diesel exhaust odour adsorption.
- Odour control for hydroponics gardening

Address: AAC Eurovent Ltd, AAC House, Unit K Maybrook Industrial Estate, Maybrook Road, Brownhills, West Midlands WS8 7DG. UK.

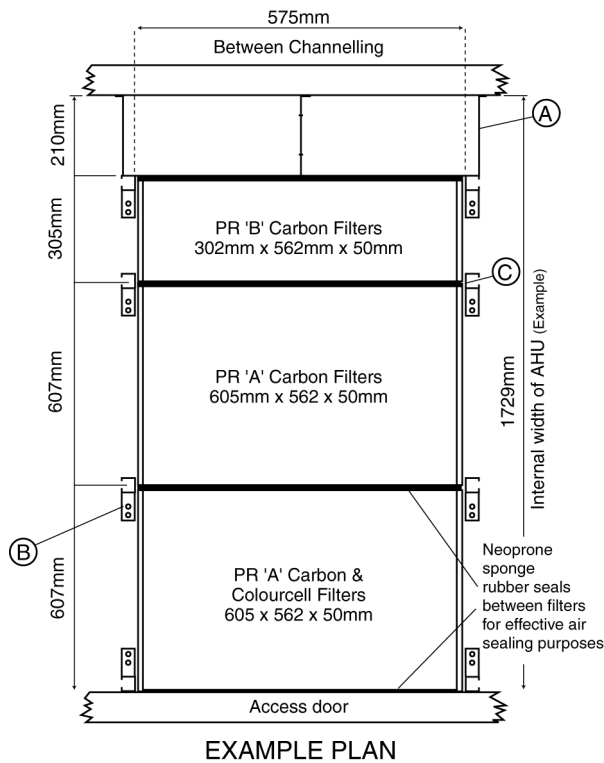
Tel: 08444 77 4884 **Fax:** 08444 77 4797 **International Callers Tel:** +44 (0) 1543 379823

Email: sales@aaceurovent.co.uk **Website:** www.aaceurovent.co.uk

Five Easy Steps To Installing The AAC Swiftkit®.

Step 1.

Plan filter layout (typical layout shown) for positioning of vertical support channelling dictated by the filter sizes.



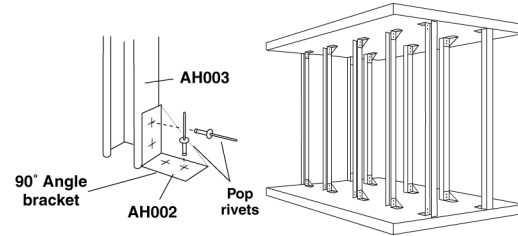
- A. Galvanised m/s bulkhead fabrication (AH001) if required
- B. Galvanised m/s 90° bracket (AH002)
- C. Galvanised m/s channelling of proprietary manufacture (AH003)
- D. Extruded aluminium filter slides complete with brushpile. (AH004).

Step 2.

Fix bulkhead into position on rear wall, if required to take up any excess space in the AHU unit.

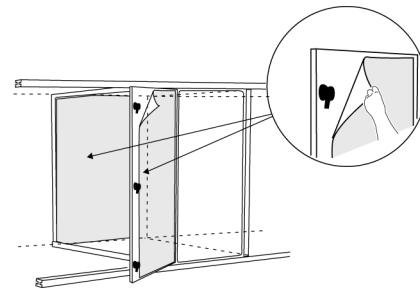
Step 3.

Fit vertical support channelling (AH003) into position.



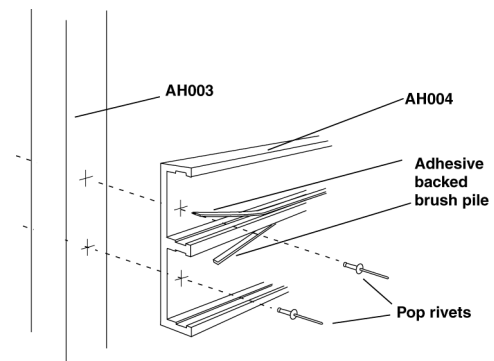
Step 4.

Apply foam to rear wall/bulkhead and door panel using self adhesive sponge



Step 5.

After determining the spacing for the aluminium extrusions, the aluminium extrusions are then fixed in



place using a pop riveter and adhesive backed brush pile is applied.

Address: AAC Eurovent Ltd, AAC House, Unit K Maybrook Industrial Estate, Maybrook Road, Brownhills, West Midlands WS8 7DG. UK.

Tel: 08444 77 4884 **Fax:** 08444 77 4797 **International Callers Tel:** +44 (0) 1543 379823

Email: sales@aaceurovent.co.uk **Website:** www.aaceurovent.co.uk